



FOXY

ADVANCED



FOXY Advanced Crane System

Simply intelligent.



PANTHER®

FOXY Advanced Crane System

various
bases



FOXY Basis



Mammut Base



Buddy Dolly

The FOXY Advanced Crane System is an investment for the future. Start with just the dolly as a basic version, build it up, as you go along. The FOXY Advanced will save you time and money.

Mit dem FOXY Advanced investieren Sie mit System. Sie beginnen mit der FOXY Basis als Grundversion, die auch als Leichtdolly eingesetzt werden kann. Der FOXY Advanced spart Ihnen Geld und Zeit bei Filmproduktionen.

FOXY Advanced pyramid

compact



Form follows function. The FOXY Advanced pyramid was designed in such a way that it can be used as the storage point for all crane parts. The patented construction facilitates easy transport and orderly storage of all elements of the FOXY Advanced Crane. All it takes now is one person to transport the crane to the location site.

Form follows function. Die FOXY Advanced Pyramide bietet eine wertvolle Hilfsfunktion: Die Aufnahme aller Einzelteile. Diese patentierte Konstruktion ermöglicht den einfachen Transport und die übersichtliche Lagerung aller Kranelemente. Jetzt kann eine Person den kompletten Kran auf einmal zur Location bringen.

Specifications

FOXY Advanced System

Trapezoid / Trapez:

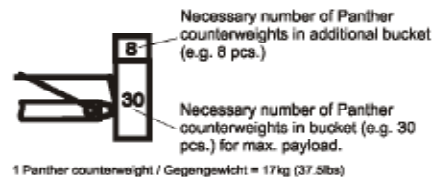
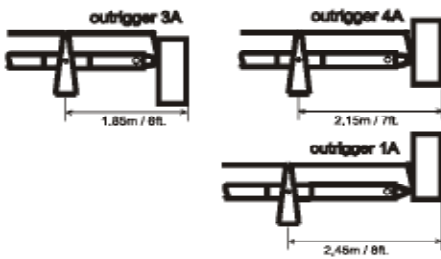
Standard Trapezoid
(all versions)



optional Trapezoid compact
(up to version 6)

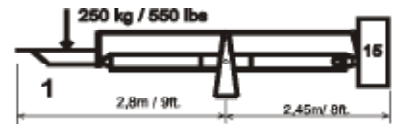


Rear side / Hintere Seite:

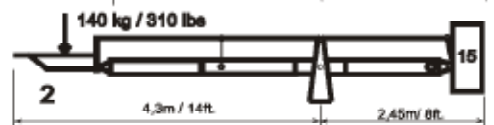


Platform Versions

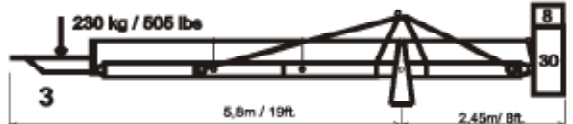
max. Height/Höhe:
3,7m(12ft.)



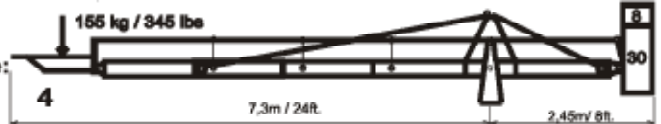
max. Height/Höhe:
4,9m(16ft.)



max. Height/Höhe:
6,1m(20ft.)

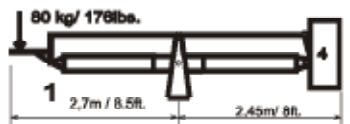


max. Height/Höhe:
7,3m(24ft.)

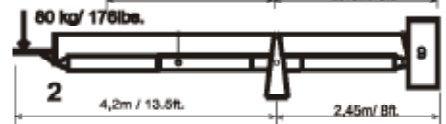


Remote Versions

max. Height/Höhe:
3,7m(12ft.)



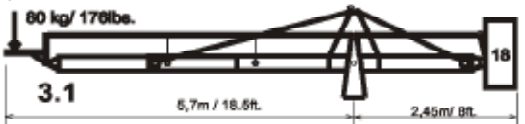
max. Height/Höhe:
4,9m(16ft.)



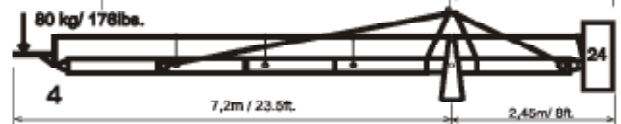
max. Height/Höhe:
6,1m(20ft.)



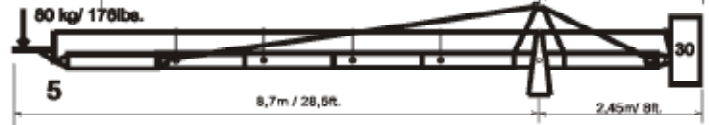
max. Height/Höhe:
6,1m(20ft.)



max. Height/Höhe:
7,4m(24.3ft.)



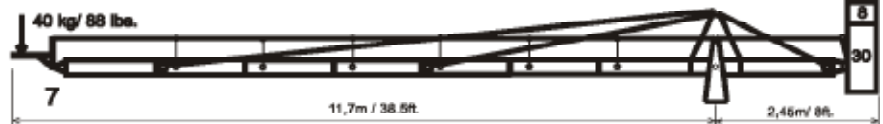
max. Height/Höhe:
8,6m(28.3ft.)



max. Height/Höhe:
9,8m(32.3ft.)



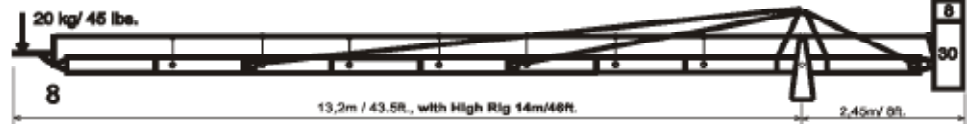
max. Height/Höhe:
11,1m(36.5ft.)



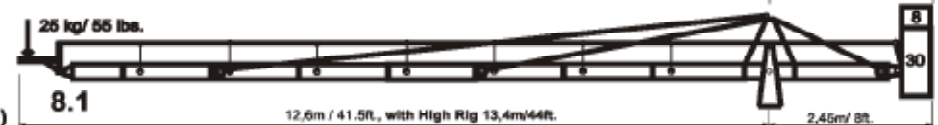
max. Height/Höhe:
10,5m(34.6ft.)



max. Height/Höhe:
12,3m
(40.5ft.)



max. Height/Höhe:
11,8m(39ft.)



The measurements and weights may differ up to 2 % due to production tolerances.

Die Maße und Gewichte können aufgrund von Fertigungstoleranzen um 2 % abweichen.

Special length, versions and accessories on request.

Weitere Längen, Versionen und Zubehör auf Anfrage.

FOXY Advanced details



double bracing



flexible handle for easy operation



patented transport solution,
easy handling



monitor holder



brake for track wheels



detachable platformboard for
special shots



modular, various length



push bar



FOXY Jib arm: Euro-FOXY Adapter and
weight bar

Advanced Upgrade Kit

With few components, all existing FOXY Cranes can be upgraded to the FOXY Advanced.

Mit wenigen Teilen können alle bisherigen FOXY Kräne zum FOXY Advanced aufgerüstet werden.

PANTHER GmbH

Raiffeisenallee 3 | 82041 Oberhaching-Munich | Germany
T +49.89.61 39 00 01 | F +49.89.61 31 00 0
contact@panther.tv | www.panther.tv

PANTHER Dollies & Cranes

801 S. Main St. | Burbank, CA 91506 | USA
T +1.818.84 13 110 | F +1.818.84 13 220
contact@panther.us | www.panther.us

